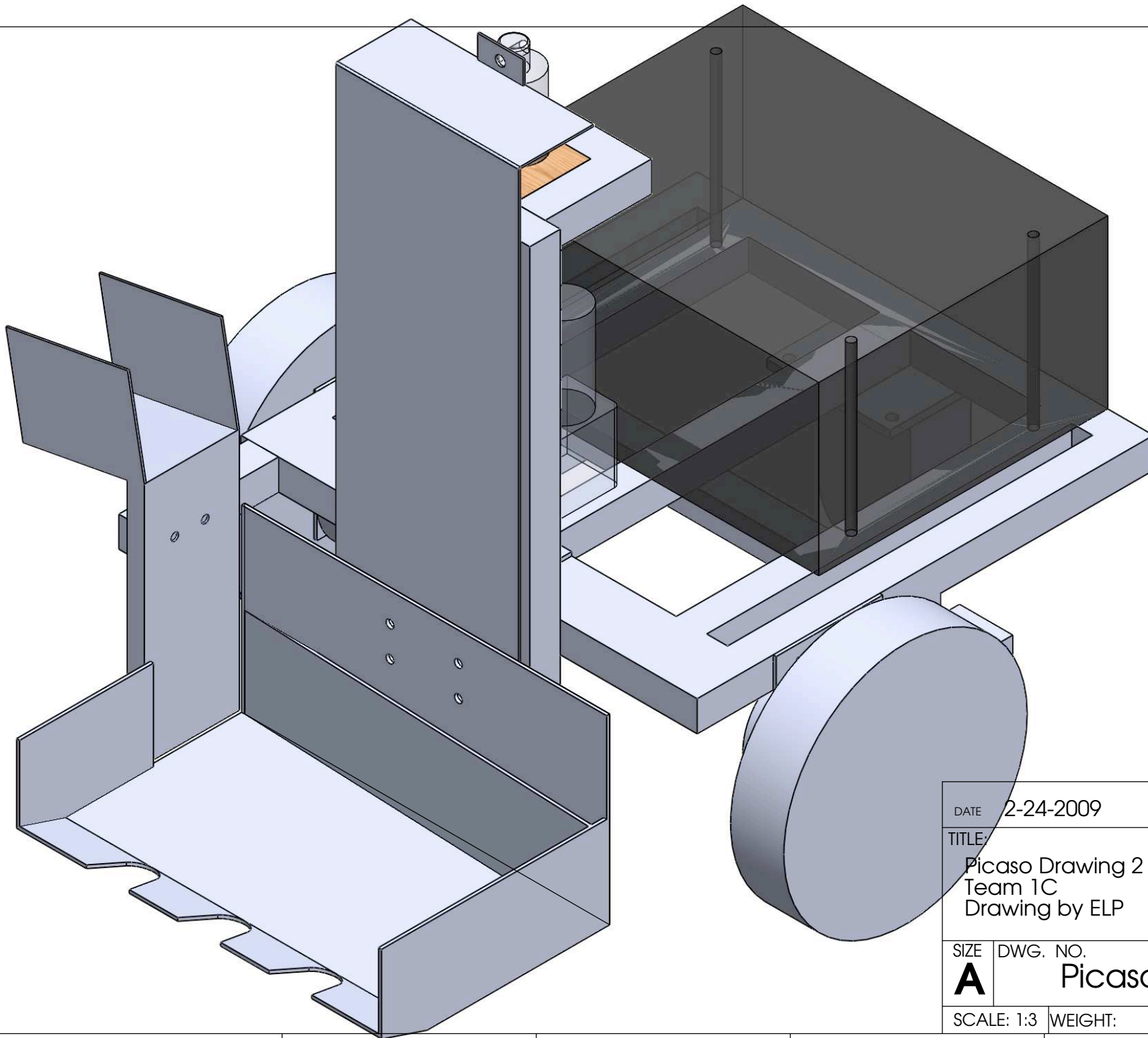


| ITEM NO. | PART NUMBER | QTY. |
|----------|----------------------------|------|
| 1 | Frame | 1 |
| 2 | Motor Mount | 2 |
| 3 | Wheel Hub | 2 |
| 4 | 8-in. Wheel | 2 |
| 5 | 5-in. Caster | 1 |
| 6 | Linear Actuator | 1 |
| 7 | Computer Box | 1 |
| 8 | Linear Shaft | 1 |
| 9 | 8020_Slider | 1 |
| 10 | Bucket Mount | 1 |
| 11 | Catcher | 1 |
| 12 | Linear Actuator Stabalizer | 1 |
| 13 | 150rpm Motor | 1 |
| 14 | Ball Hopper | 1 |
| 15 | Hopper Mount 8020 | 1 |
| 16 | 150rpm Motor RH | 1 |
| 17 | Caster Mount | 1 |
| 18 | Linear Actuator L-Bracket | 2 |

| | | |
|---|---------------------------|--------------|
| DATE 2-24-2009 | | |
| TITLE: Picaso Drawing 1 Team 1C Drawing by ELP | | |
| SIZE A | DWG. NO. Picaso | REV |
| SCALE: 1:12 | WEIGHT: | SHEET 1 OF 4 |



DATE 2-24-2009

TITLE:
Picaso Drawing 2
Team 1C
Drawing by ELP

| SIZE | DWG. NO. | REV |
|----------|----------|-----|
| A | Picaso | |

| | | |
|------------|---------|--------------|
| SCALE: 1:3 | WEIGHT: | SHEET 2 OF 4 |
|------------|---------|--------------|

5

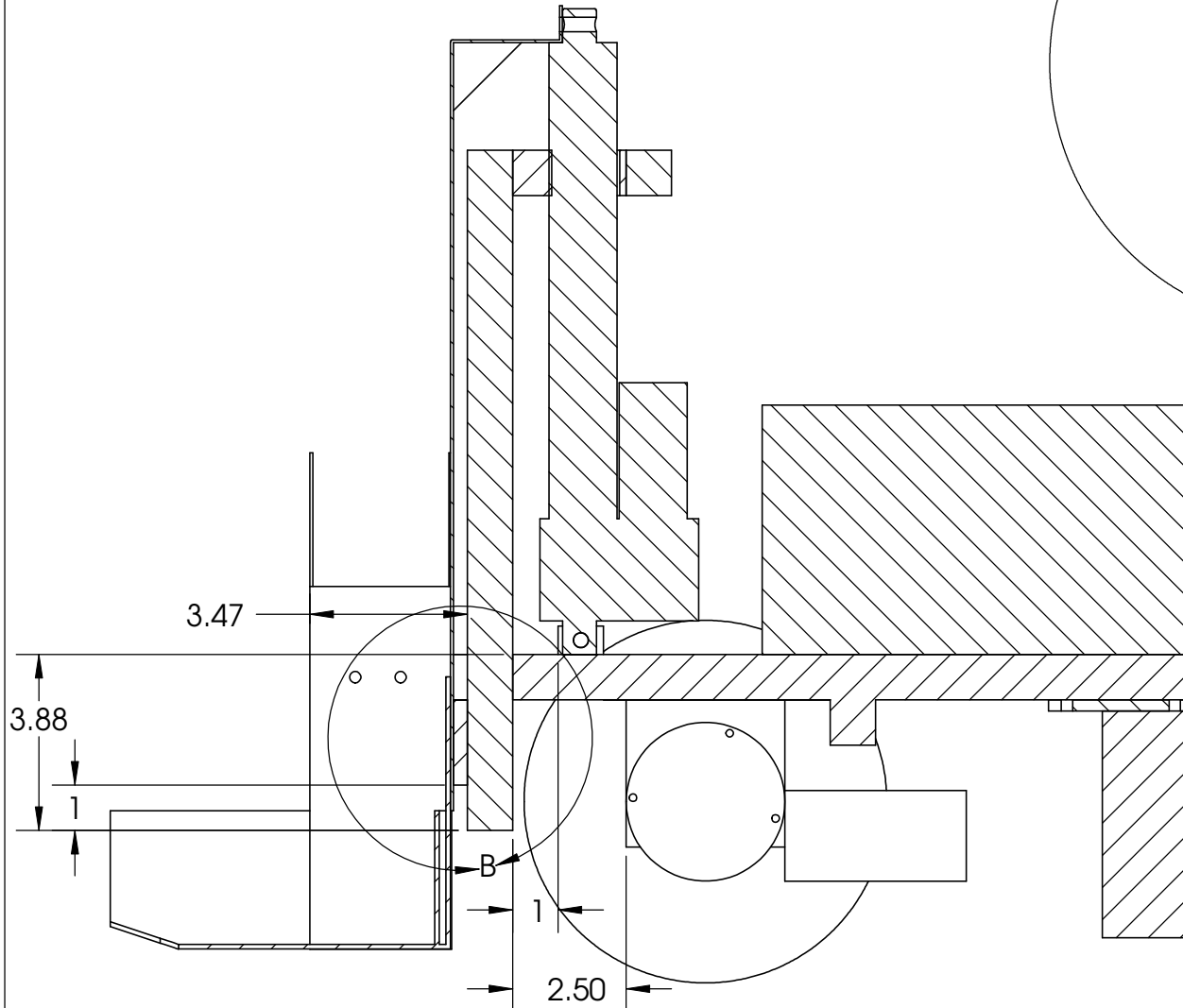
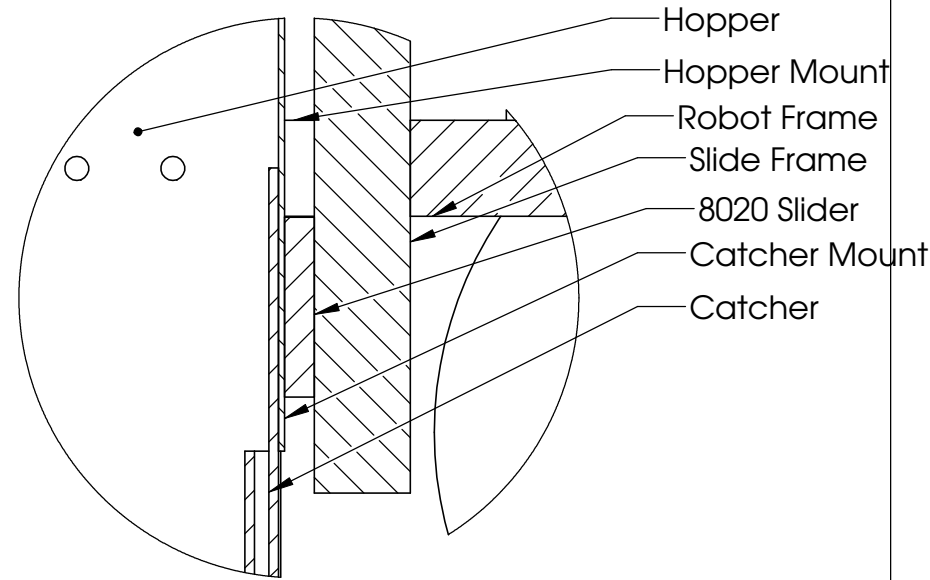
4

3

2

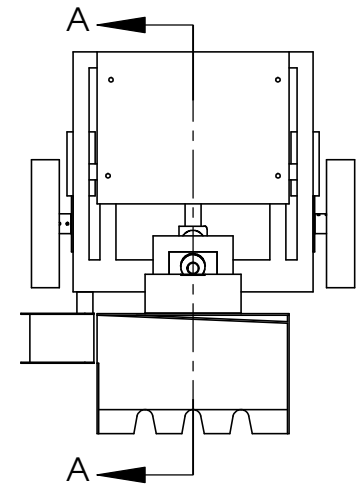
1

Most parts mount in an obvious position
 i.e. Flush with an edge or where screws are.
 Therefore only offset features are dimensioned.



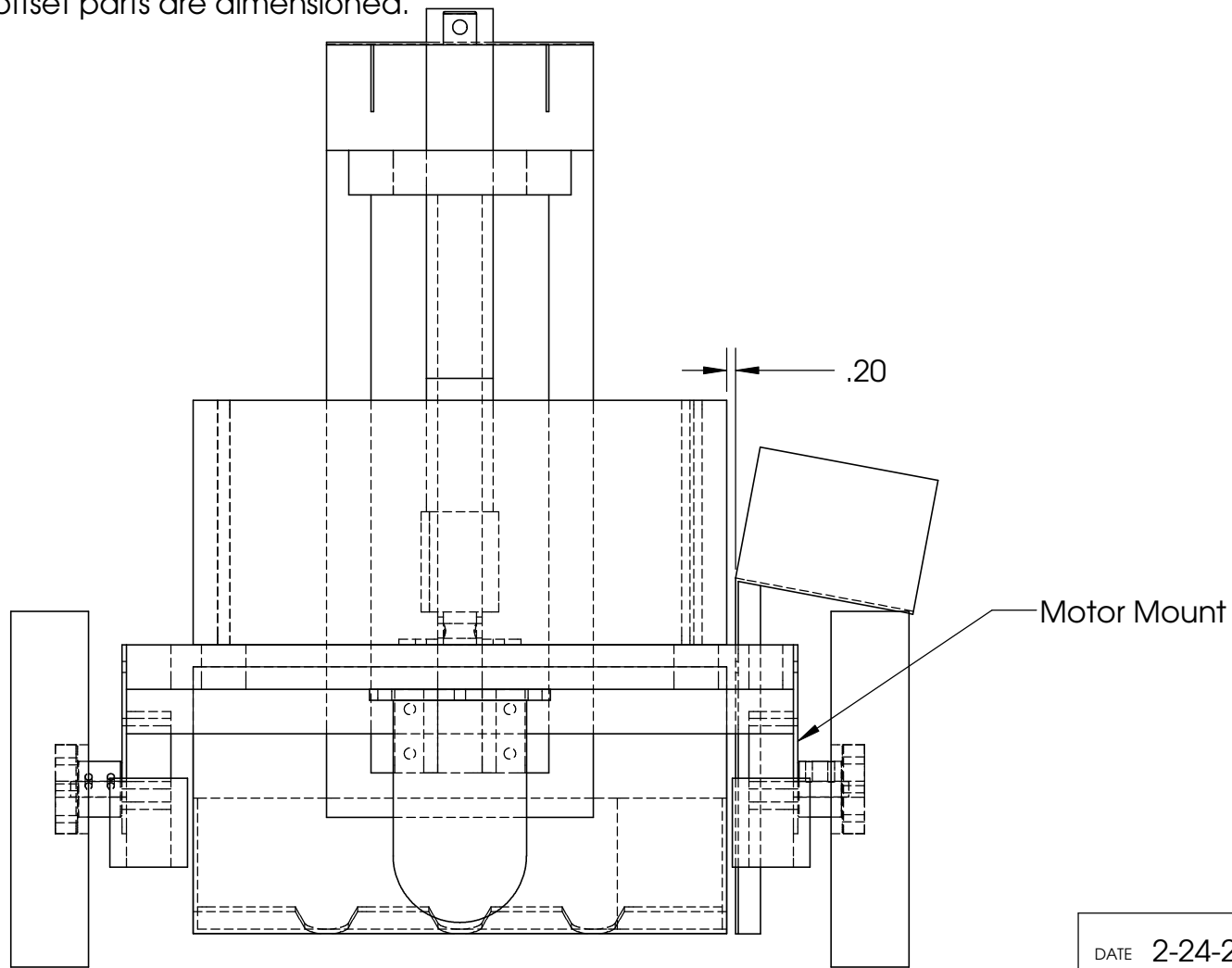
SECTION A-A
 SCALE 1 : 4

DETAIL B
 SCALE 1 : 2



| | | |
|---|--------------------|--------------|
| DATE 2-24-2009 | | |
| TITLE: Picaso Drawing 3 Team 1C Drawing by ELP | | |
| SIZE A | DWG. NO. Picaso | REV |
| SCALE: 1:12 | WEIGHT: | SHEET 3 OF 4 |

Most every part is mounted down the center.
Exceptions are mounted in obvious positions.
i.e. Flush with an edge or where screws are.
Therefore only offset parts are dimensioned.



DATE 2-24-2009

TITLE:

Picasso Drawing 4
Team 1C
Drawing by ELP

SIZE

DWG. NO.

REV

A

Picasso

SCALE: 1:12

WEIGHT:

SHEET 4 OF 4

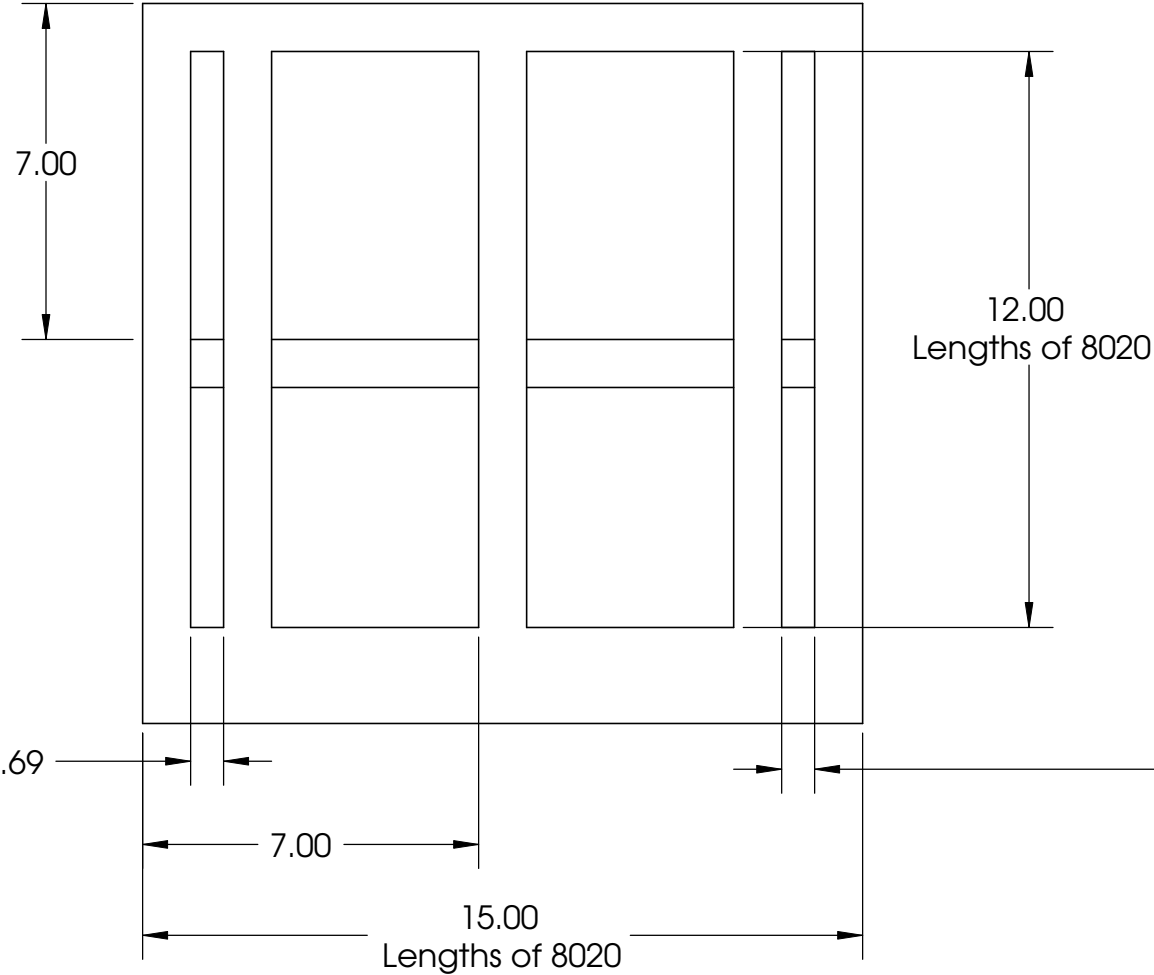
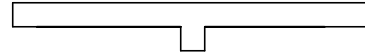
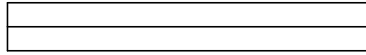
5

4

3

2

1



Mat'l: 80/20
All dimensions within .01"

| | | |
|---|--------------------------|--------------|
| DATE 2-24-2009 | | |
| TITLE: Picaso Drawing 5 Team 1C Drawing by ELP | | |
| SIZE A | DWG. NO. Frame | REV |
| SCALE: 1:8 | WEIGHT: | SHEET 1 OF 1 |

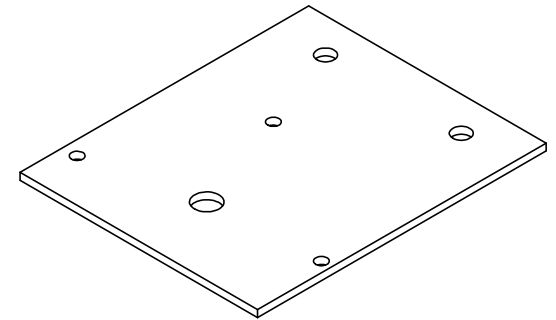
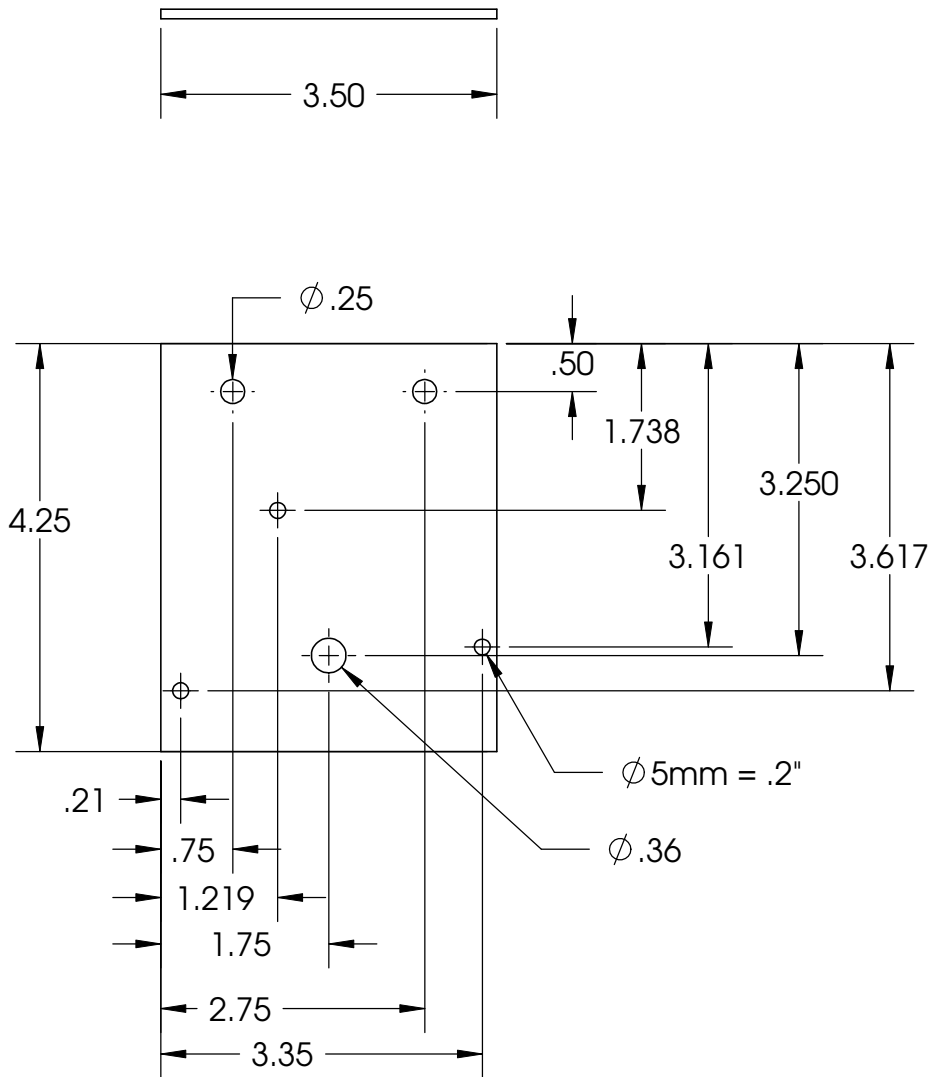
5

4

3

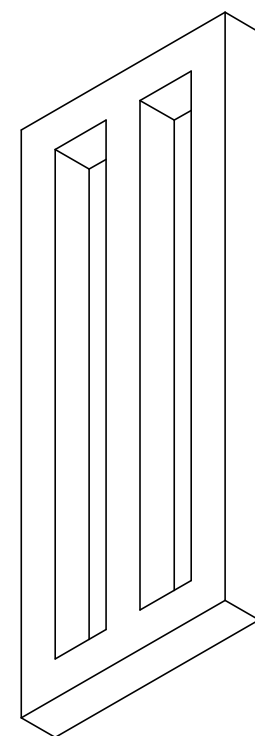
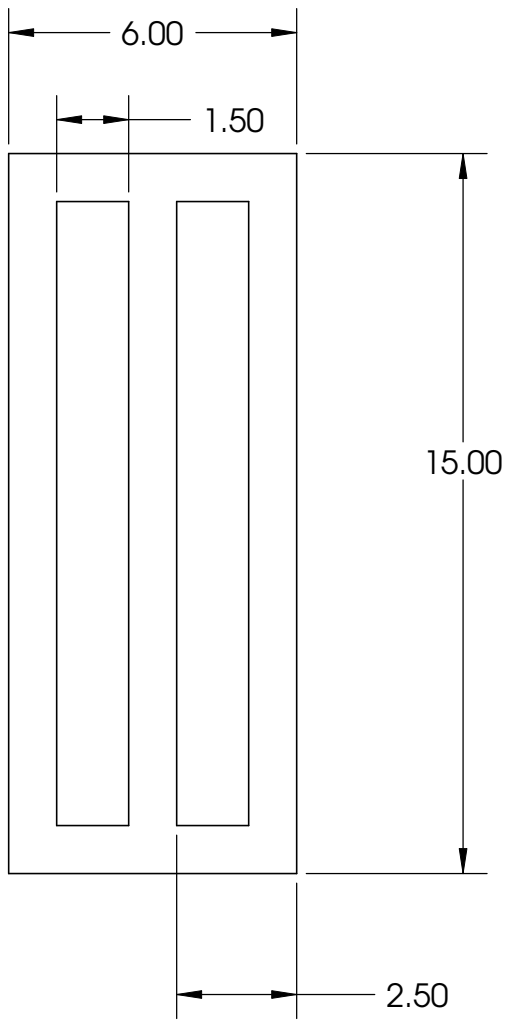
2

1



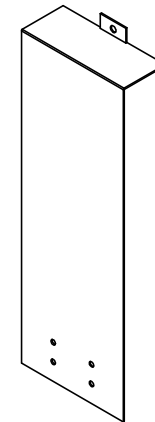
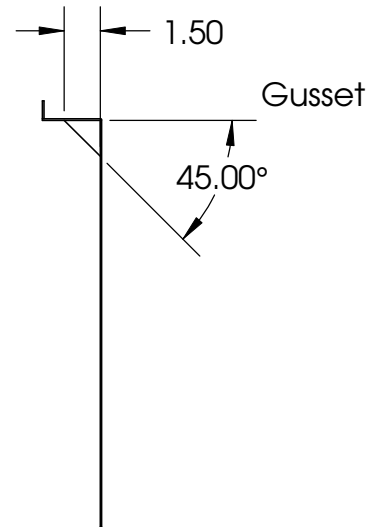
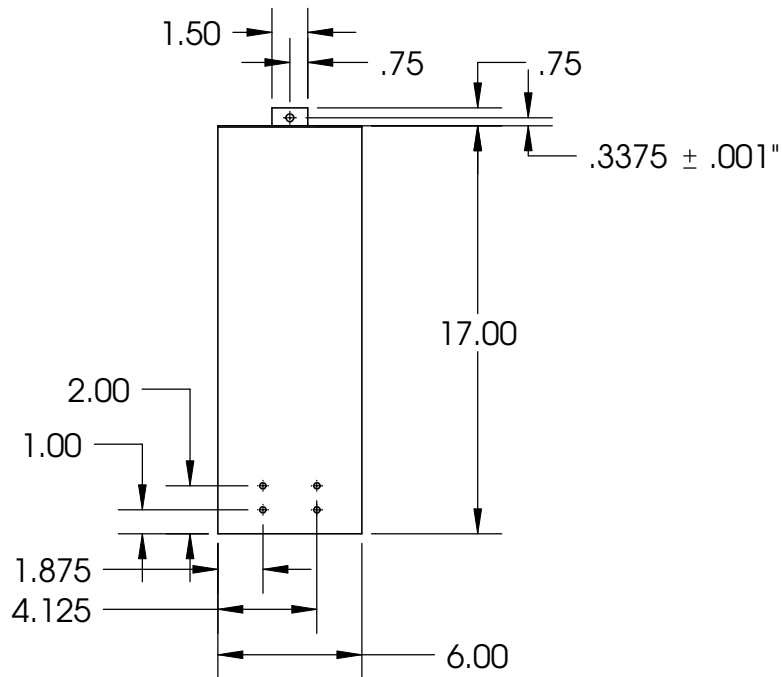
Mat'l : 1/4" Aluminum
 Hole pattern is essential, dimensions within .001"
 Reference motor information sheet when milling part.

| | | |
|---|-------------------------|--------------|
| DATE 2-24-2009 | | |
| TITLE: Picaso Drawing 6 Team 1C Drawing by ELP | | |
| SIZE A | DWG. NO. Motor Mount | REV |
| SCALE: 1:2 | WEIGHT: | SHEET 1 OF 1 |

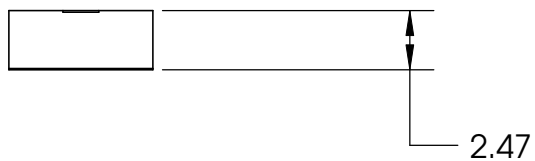


To be developed out of 80/20
Dimensions with .01"

| | | |
|---|---------------------------------|--------------|
| DATE 2-24-2009 | | |
| TITLE: Picaso Drawing 7 Team 1C Drawing by ELP | | |
| SIZE A | DWG. NO. Linear Shaft | REV |
| SCALE: 1:4 | WEIGHT: | SHEET 1 OF 1 |



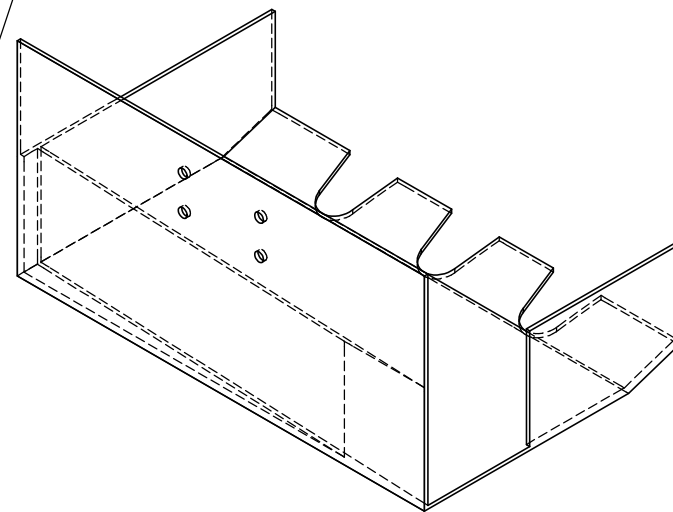
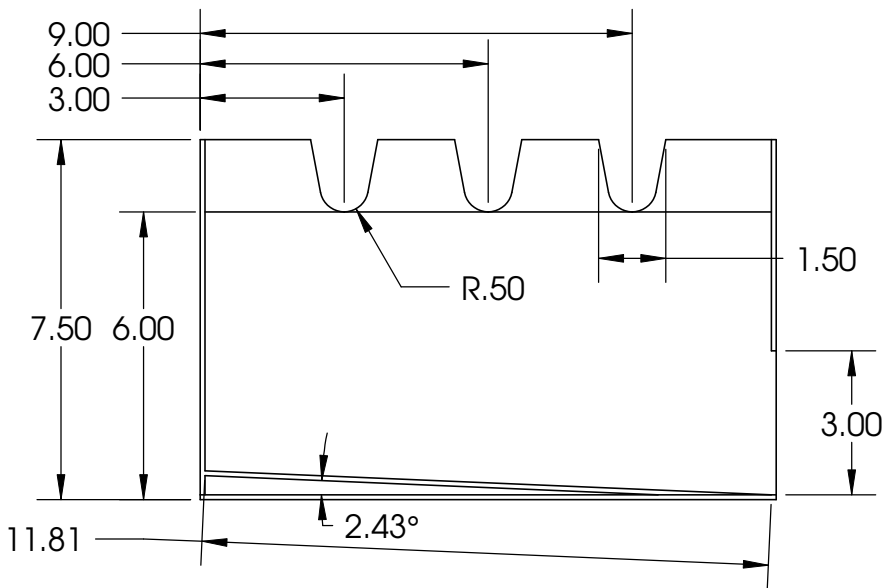
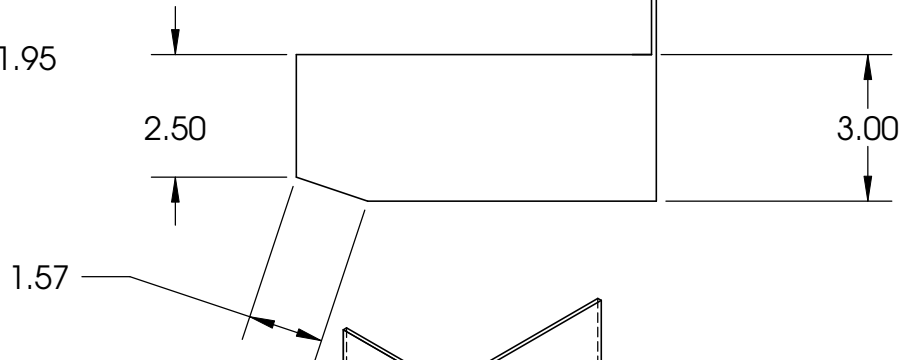
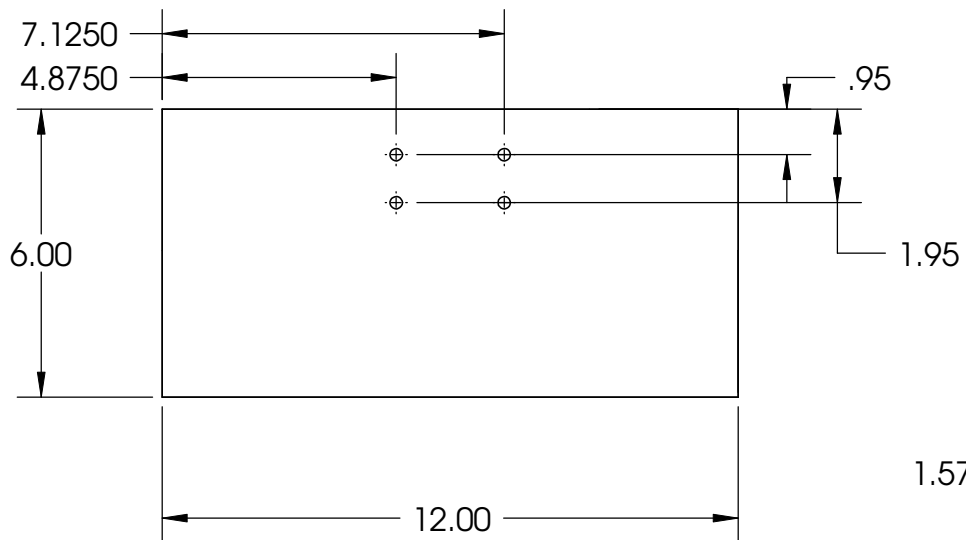
Dimensions are fine, within .001"
Hole pattern is essential to mount on slide.



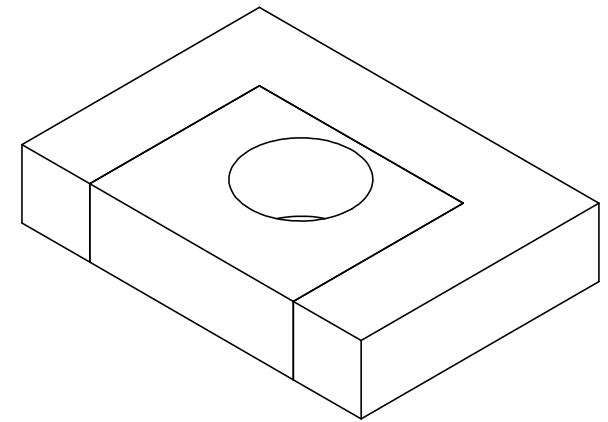
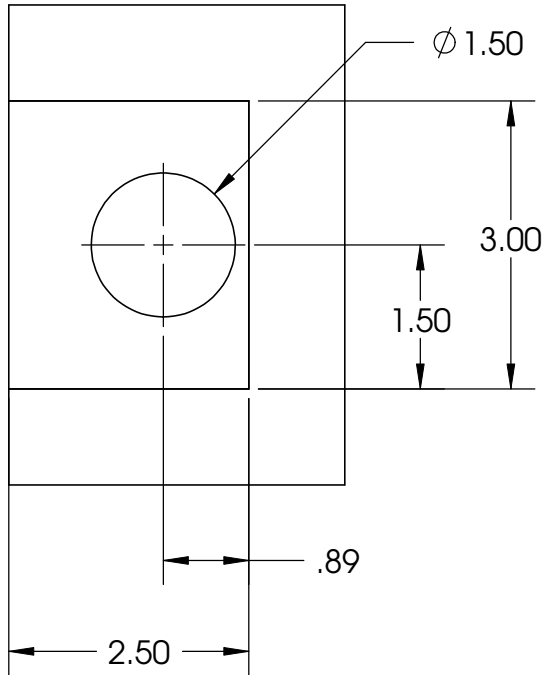
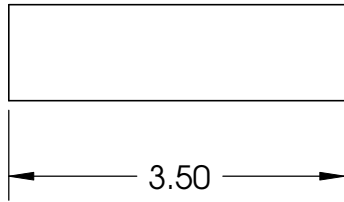
This dimension subject to precise fit.
Hold part in place and cut with this knowledge.

Mat'l: 16 Gauge Steel
All dimensions within .01" unless noted

| | | |
|---|--------------------------|--------------|
| DATE 2-24-2009 | | |
| TITLE: Picaso Drawing 8 Team 1C Drawing by ELP | | |
| SIZE A | DWG. NO. Bucket Mount | REV |
| SCALE: 1:8 | WEIGHT: | SHEET 1 OF 1 |



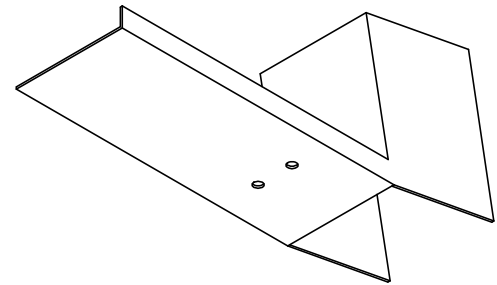
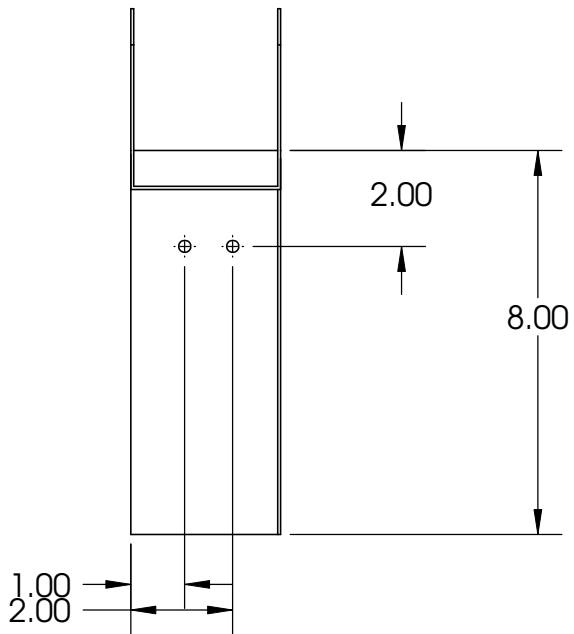
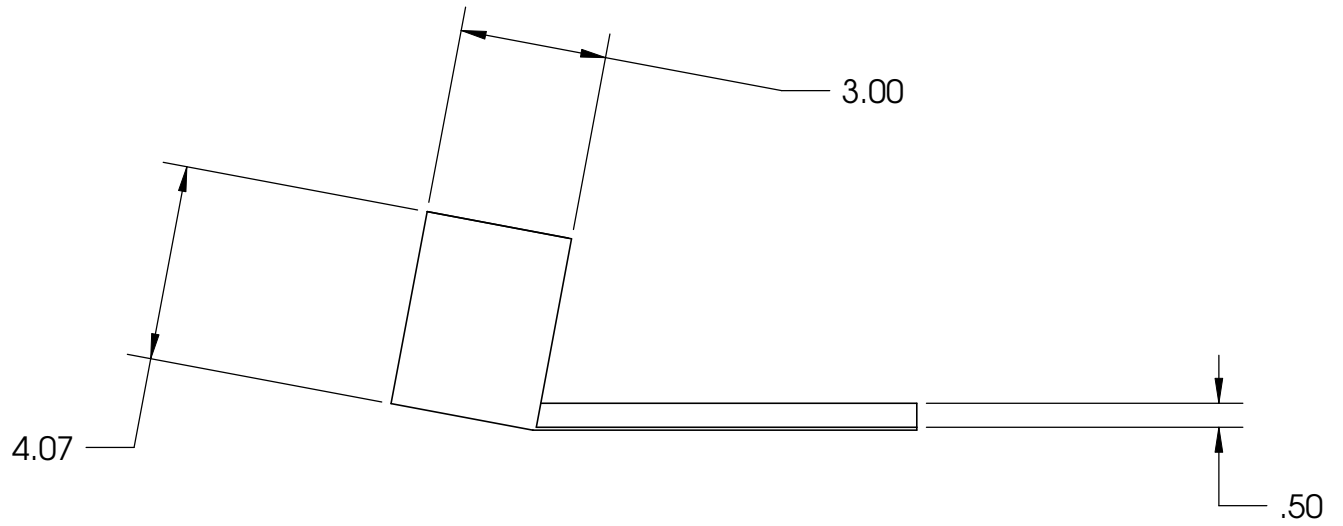
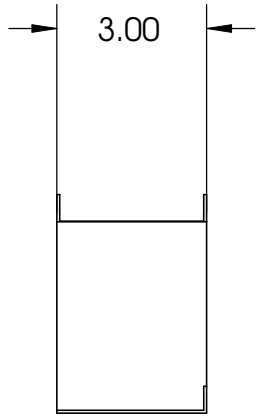
| | | |
|---|----------------------------|--------------|
| DATE 2-24-2009 | | |
| TITLE: Picaso Drawing 9 Team 1C Drawing by ELP | | |
| SIZE A | DWG. NO. Catcher | REV |
| SCALE: 1:4 | WEIGHT: | SHEET 1 OF 1 |



Frame is 80/20; Innards are wood
 Hole may only be larger, not smaller.
 Dimensions within .01"

| | | |
|--|----------|---------|
| DATE 2-24-2009 | | |
| TITLE: Picaso Drawing 10 Team 1C Drawing by ELP | | |
| SIZE | DWG. NO. | REV |
| SCALE: 1:2 | | WEIGHT: |
| SHEET 1 OF 1 | | |

Linear Actuator Stabilizer



Mat'l : 16 Gauge Steel
All dimensions within .01"

DATE 2-24-2009

TITLE:

Picasso Drawing 11
Team 1C
Drawing by ELP

SIZE

A

DWG. NO.

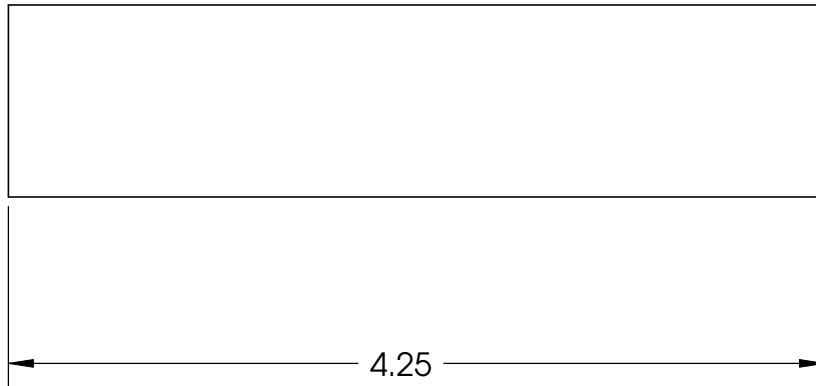
Ball Hopper

REV

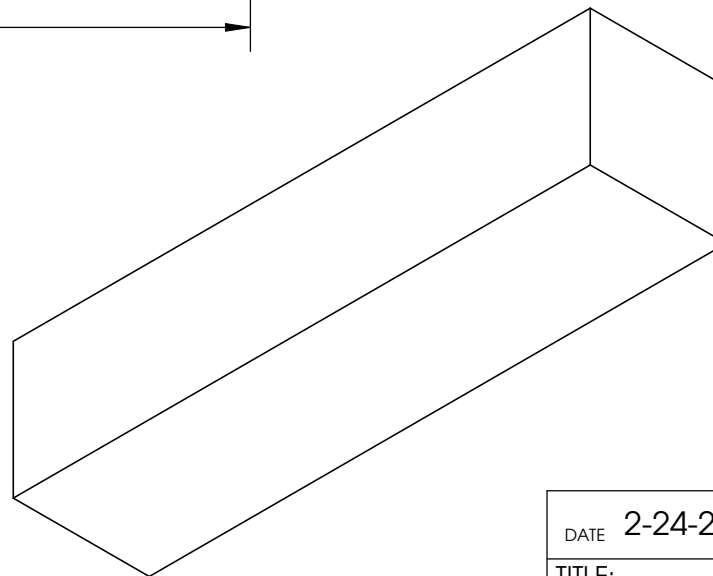
SCALE: 1:4

WEIGHT:

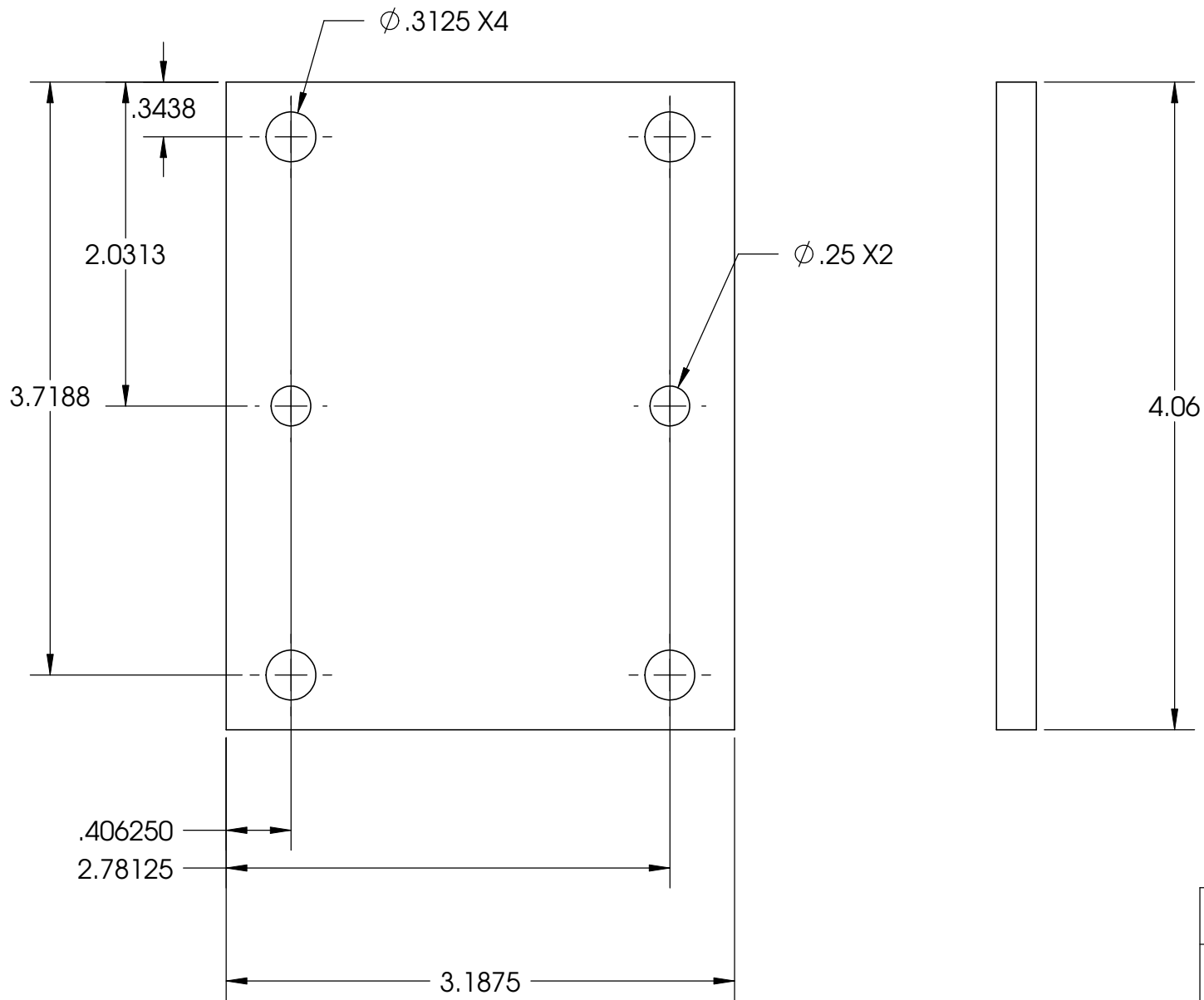
SHEET 1 OF 1



Length of 80/20
Dimension does not need to be exact.

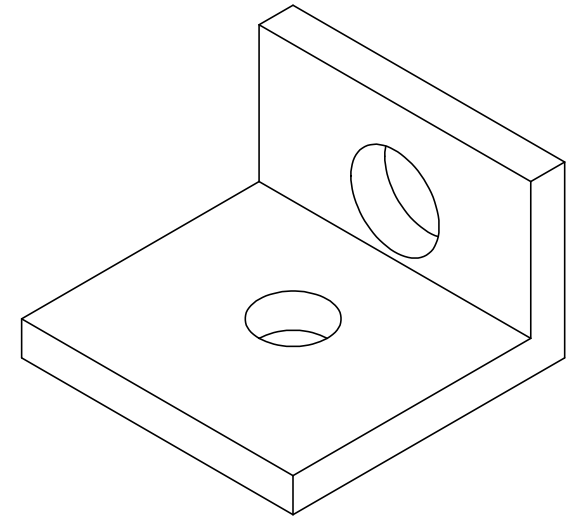
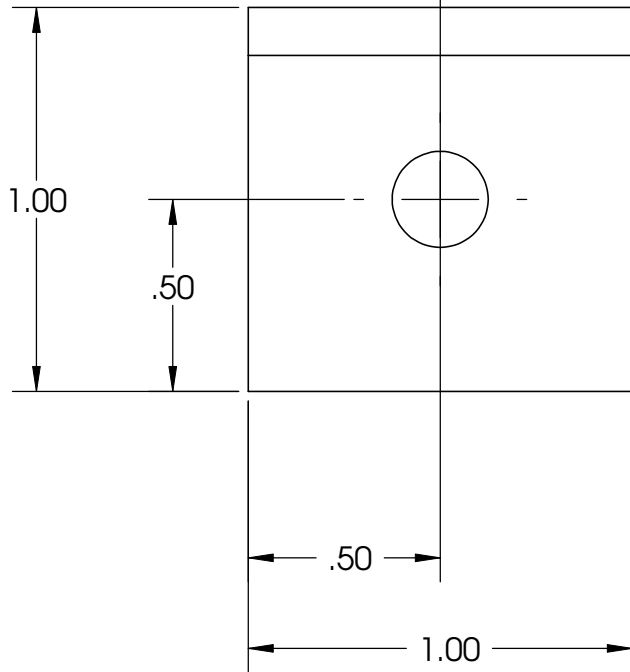
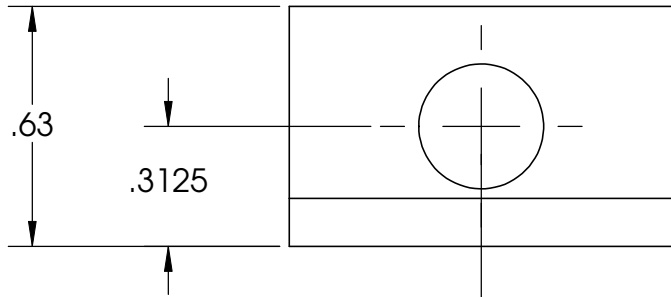


| | | |
|--|----------|--------------|
| DATE 2-24-2009 | | |
| TITLE: Picaso Drawing 12 Team 1C Drawing by ELP | | |
| SIZE | DWG. NO. | REV |
| A opper Mount 8020 | | |
| SCALE: 1:1 | WEIGHT: | SHEET 1 OF 1 |



Mat'l : 1/4" Aluminum
 Dimensions precise, within .001"
 Reference the 5" Caster wheel if necessary

| | | |
|--|--------------------------|--------------|
| DATE 2-24-2009 | | |
| TITLE: Picaso Drawing 13 Team 1C Drawing by ELP | | |
| SIZE A | DWG. NO. Caster Mount | REV |
| SCALE: 1:1 | WEIGHT: | SHEET 1 OF 1 |



Mat'l: Aluminum Angle 3/16" thick
 Dimensions within .001"

| | | |
|--|----------|---------|
| DATE 2-24-2009 | | |
| TITLE: Picaso Drawing 14 Team 1C Drawing by ELP | | |
| SIZE | DWG. NO. | REV |
| SCALE: 2:1 | | WEIGHT: |
| SHEET 1 OF 1 | | |

Linear Actuator L-Bracket